

# The Grapevine Great Hinton

## Great Hinton Parish Council

### Village Bus Shelter

You will have noticed that the bus shelter on Steeple Ashton Road, close to the Keevil Road Crossroads, has disappeared. I am sorry to report that the shelter was the victim of a "Hit & Run" collision with a car or van.

The Police believe that the shelter was hit by a vehicle late in the evening in early October. The collision left debris strewn across the Steeple Ashton Road and the shelter almost totally destroyed. With the driver lacking the honesty to report the collision, we are left without either a shelter or an insurance to call upon for its rebuilding. If you were a witness to the collision or can help identify the driver, please contact the Police.

Though the bus service is, at best, infrequent it is the only public transport link to Trowbridge and Devizes that serves our village. The bus shelter provided some degree of protection from the elements for users of both the scheduled and school bus services.

To replace the shelter with something that meets modern regulatory requirements is likely to cost at least £1,000/£1,500. It may be possible to obtain a grant for up to 50% of the cost, but that would still leave quite a large bill for the Parish Council. Such a cost would almost certainly result in an increase in the Council Tax bill for each household in the Parish for one or two years. Great Hinton does however currently enjoy one of the lowest Council Tax charges of all parishes in West Wilts.

Before taking the matter any further the Parish Council would like to hear your views. In particular we want to know if people feel strongly about whether the shelter should be replaced at all? If so should it be a modern clear-sided

## DECEMBER 2001

Great Hinton made BBC Ceefax with news of the demolition of the bus shelter, the Art Show was reported on local radio, and there was an article on Jon at the Linnet in the Wiltshire Times. The Grapevine can't bring you the news as it breaks but it does give you the stories behind the news – so read on!

**Richard Clarke Editor 870635**

structure (best for personal safety) or should it be a timber type of structure. Please make your views known to a parish councillor, so that our decision reflects as far as possible your wishes.

### Semington By-Pass

The Public Inquiry has now been held and as reported in the last Grapevine The Parish Council has submitted a written proof of evidence to the Inquiry, outlining our objection to the extension of the new road across open countryside to the South of the A361 (Devizes Road). As part of its process the enquiry visited the village in order to look more closely at the issues we raised in terms of visual and sound impact. We now await the Secretary of State's decision.

### Highway Maintenance

The County Council has recently introduced a system of "Parish Lengthsmen", who are small teams of highways workers travelling around Wiltshire on a pre-agreed programme, undertaking small works notified to them by the Parish Councils. Typically this work includes filling small pot-holes, clearing road drainage gulleys, cleaning road signs etc. The team are next due to visit us in March/April so if you become aware of a task for the lengthsmen please let one of your Parish Councillors know.

**Chris Munday Chairman 870912**

### In Memory of Jean Hallam

A red hawthorn tree has been planted at the end of the line of commemorative trees near the crossroads. The planting was made jointly by the Ladies Club and the Village Hall Committee. Bulbs will be planted at the foot of the tree.

LOST – Royal Naval Crown Brooch  
On November 11 between St Mary's Church and  
The War Memorial Steeple Ashton  
or the Linnet and Memorial Hall, Great Hinton.  
Great sentimental value. Please call 870662.

### Lunch Club

After a four month break for the summer, the lunch club resumed on 13<sup>th</sup> September and seems to be as popular as ever. Eleven members attended in September and eighteen in October and November.

Anyone is welcome to join us – the more the merrier! We usually meet on the third Thursday of each month, although the Christmas lunch will be on Thursday, 13<sup>th</sup> December at 12.15pm for 12.30pm. The cost of lunch is normally £3 per head except at Christmas when it will be £3.50 to allow for the cost of extras.

Each month we run a small raffle and proceeds go to buying bits and pieces for the village hall, e.g. oven gloves, cruets and serving spoons.

**Audrey Plummer 870586**

### Harvest Festival

There was a slight misunderstanding about the Harvest Festival this year. Owing to work being carried out to rectify the stairs in the village hall, the harvest service was held on the third Sunday in October. Six villagers, the Vicar's mother and my two older grandchildren nobly trilled our way through popular harvest hymns, ably led by David Hart, the Vicar and accompanied by Harold Stagg, St Mary's organist on keyboard.

Mike Trueman auctioned the produce and between us we raised £27.50 for Trowbridge Action on Homelessness. Thanks to all who helped decorate the hall on Saturday and to all who donated produce.

**Audrey Plummer**

### Remembrance Service

The annual remembrance service and wreath laying was held outside the village hall at mid day on Remembrance Sunday, which was as usual well supported by the Steeple Ashton branch of the Royal British Legion. The wreath commemorates all those from this village who have served in the defence of our Country and in particular those who lost their lives in that service. If you would like to join in next year the service will, as every year, be at mid-day on Remembrance Sunday and last for just 5/10minutes.

### Hall Bookings

Apart from the two weekly bookings of the Art Club and the Judo Club, there have been only a couple of bookings. With the festive season nearly upon us I would remind you that the hall is a marvellous place for a party. A morning, afternoon or evening session is only £10.

**David Harnott 871196**

### The Linnet

I expect you will have read on the front page of the Wiltshire Times and Chronicle that the Linnet is in the running to win the 'Best Pub Restaurant' accolade in the national pub food awards. Our village pub has broken through to the finals of this prestigious national competition, the awards for which will be staged at London's Hilton Hotel in February.

Jonathan Furby, our Landlord and good friend, is a trained chef who cooked nouvelle cuisine in London's Park Lane restaurants for 15 years. Today, Jon is serving a varied cuisine of generous proportion, offering good value for money. Out of 9,000 pubs invited to enter this competition, the Linnet is the only Wiltshire pub amongst the four finalists, the other pubs are in Wales, Buckinghamshire and Cumbria.

When congratulating Jonathan for being nominated, he pointed out that he couldn't achieve the high standard of food and service without his dedicated staff. I am sure you will all join me in wishing Jonathan luck in the final stage of the competition.

**Mike Trueman**

### PARTY TIME

**CELEBRATE WITH FRIENDS  
AND SEE IN THE NEW YEAR  
AT THE LINNET**

**ENJOY A BUFFET SUPPER  
INCLUDING POACHED SALMON,  
LOBSTER, VENISON AND THE  
TRADITIONAL HAGGIS WITH  
CHAMPAGNE AT MIDNIGHT  
DISCO DANCING IN THE  
MARQUEE...TICKETS AT £25  
.....AND SELLING FAST  
SO BUY YOURS NOW**

**JON 870354**



### HALL CLEANER REQUIRED

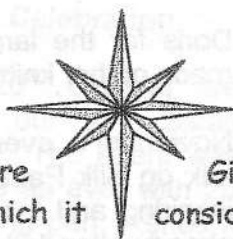
We are looking for someone to clean the Hall on a monthly basis, initially for 3 hours a month plus additional hours if necessary.  
£5.50 per hour.

Please contact Neil Haynes  
on 870153



From the Vicarage

Dear Friends,



Some years ago the Scripture Gift Mission produced a Christmas leaflet entitled - "It's Christmas again!" - in which it considered the response of those involved in the great event of the first Christmas. It looked at Mary's fear, when the angel first appeared to her, eventually leading to a quiet acceptance of God's will for her life. Then there was Joseph's disappointment, when the thought, first of all, that Mary had been unfaithful, but who later gave her full support in her God-given role. The shepherds were excited at the news; the wise men came to worship the new-born King; the elderly Simeon rejoiced to hold the long awaited Messiah, as God promised he would.

What is our response as we come to yet another Christmas Day? Lines from two of the carols may give us cause for reflection. 'Man shall live for evermore, because of Christmas Day'. But that is not so, if we carefully read the New Testament. 'Born that man no more may die' portrays the truth, for we are speaking of eternity here. God's great promise is that **all who believe and trust** in His Son will live with him for ever, the other side of death. The offer is for all, the reality is only for those who are willing to accept his gracious and loving gift.

A very happy Christmas to you and your families

David Hart (Vicar)



---

**CHRISTMAS SERVICES AT ST MARY'S STEEPLE ASHTON**

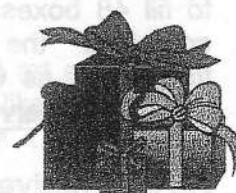
**Christingle Service Friday 14<sup>th</sup> December at 6.30pm**

**Carol Service Sunday 23<sup>rd</sup> December at 6.30pm**

**Midnight Communion Christmas Eve at 11.30pm**

**Christmas Day Family Worship at 10.30am**

---



**CAROL SINGING BY CANDLELIGHT IN THE VILLAGE HALL**

Instead of singing carols around the village The Ladies Club are inviting young and old to come to the Village Hall on Monday 17<sup>th</sup> December at 7pm for an evening of carol singing by candlelight, with coffee and mince pies and a retiring collection for Wiltshire Air Ambulance. We need your voices to make this a special event and start a village tradition...Please join us

---

**Neighbourhood Watch**

Within the last few days farmers in the village and in Keevil have "lost" farm gate posts and gates. These substantial items must have been moved by vehicle. Please let me know if you have seen or heard anything that may be relevant.

On Monday, 12<sup>th</sup> November at 3am, 4 youths were seen in the village. Again did anybody see or hear anything?. If you see anything suspicious please ring me or P.C. Gale at the Police Station. If you wish to leave details of your keyholder whilst away, I am happy to hold these details on file.

David Harnott 871196

**Our County Councillor writes**

Any resident is welcome to get in touch if they have any problems involving the County Council. I hold a surgery at my home on Saturday mornings from 10.30 to 12 noon.

**Trevor Carbin**  
228 Church Street Hilperton  
Trowbridge BA14 7RG  
01225 762032

[cllrtcabin@westwiltshire.gov.uk](mailto:cllrtcabin@westwiltshire.gov.uk)

---

Buy Your Own Club Tuesday evenings at the Linnet are still as popular as ever. We usually meet at about 8.30pm to enjoy a good chat with a drink with no rounds to buy. Come and join us. **Mike Truman**

---

## Ladies Club

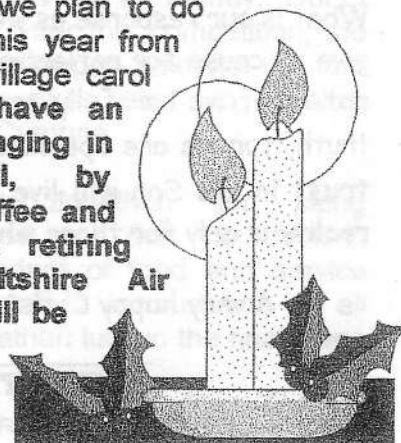
At our first meeting after the summer break, we welcomed Miss Margaret Howard who talked to us on "Needle Artistry", bringing along with her some of her creations which began with a beautifully embroidered table-cloth worked when she was only seven years of age, and it was as neat on the back as it was on the front. She continued with more adventurous pieces, most of which she had designed herself and also brought along the work being carried out on the restoration of church altar cloths of St James' Church, Trowbridge which were about 100 years old.

In October, because the village hall stairs were being altered, we all crammed into 4 Peppercorn Orchard to pack the shoe boxes for Operation Christmas Child. These boxes will be sent out to Romania in early December. We enjoyed the company of Hilary McFall and her friend, Joyce, who showed us a short video of the project in action, along with heart-tugging photographs of the children receiving their boxes. We were able to fill 48 boxes between us, ensuring each one contained the all-important toothbrush and toothpaste as well as toys, sweets and woolly hats and scarves. Special thanks must go to

Doris for the large number of scarves she had made on her knitting machine.

November's evening was a demonstration and talk on Silk Painting by Denise Haire which was inspiring and fascinating. Sandra Crumpler had already attended a class with Denise producing a very commendable silk cushion. As Audrey Plummer will not be with us for our December evenings, she brought along some wine. We started Christmas early!

We are looking forward to another delicious Christmas meal at The Linnet again on December 19<sup>th</sup> but before that we plan to do something different this year from our usual round-the-village carol singing. We will have an evening of carol singing in the village hall, by candlelight, with coffee and mince pies and a retiring collection for Wiltshire Air Ambulance. This will be on Monday, 17<sup>th</sup> December at 7pm. We hope you will all join us for what could be a new village tradition. Carol Clarke 870635



## An alternative to the Christmas Pudding

I love this chilled pudding, says Josceline Dimbley in a Sainsbury Cookbook published in 1978, because it's easy to make, looks like a snow-white Christmas pudding and tastes very good indeed.

Ingredients to serve 6 to 8

8oz	200g	full cream cheese
3oz	75g	caster sugar
3oz	75g	melted unsalted butter
2oz	50g	chopped hazelnuts
1oz	25g	candied peel
2oz	50g	chopped glace cherries
2oz	50g	chopped crystallised ginger

grated rind and juice of  
2 oranges and 1 lemon

8 trifle sponges

½oz (2 x 5ml spoon) or 1 pkt of gelatine

¼pt 125ml double or whipping cream

Beat the cream cheese with sugar and the melted butter until smooth and creamy. Stir in the chopped nuts, candied peel, chopped ginger and cherries, and the grated rind of the oranges and lemon. Slice the sponges crossways into 3 thin slices each. Put 3 or 4

slices on the bottom of a 2pt pudding basin. Then spoon a layer of the cream cheese mixture, then another layer of sponges, and so on, ending with a layer of sponges. Dilute the juice of the oranges and lemon to ¾ pint (375ml) with hot water. Dissolve the gelatine in a cup with 2 tablespoons of very hot water and stir it into the juices. Strain the juice over the mixture in the pudding basin, making sure the juice gets to the bottom of the basin by pulling the mixture back with a spoon.

Put in the fridge to set. When well chilled, dip the basin briefly in hot water and turn out on to a serving plate. Whisk the cream until thick and ice the pudding with it. Decorate the top with a sprig of holly. Chill again in the fridge before serving.

Carol Clarke



## Safari Dinner – "21<sup>st</sup> Birthday" Celebration



On 20<sup>th</sup> October we held our 21<sup>st</sup> Safari Dinner. The event was as enjoyable as ever with 20 people taking part. Since it was our 21<sup>st</sup> Birthday – yes we began in October 1991 and have held two events each year since! – it was decided that we would celebrate in style. At the end of the evening everyone who had normally participated was given raffle tickets

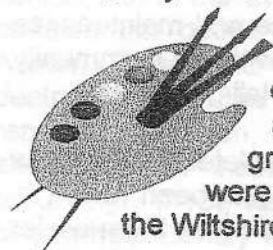
and the lucky prize winners were :  
Champagne Maureen and Terry Cunningham  
Whisky – Audrey Plummer  
Sherry – Doris and Derek Saville  
Dinner Mints – Debbie and Roger Meade

As always we would welcome new participants in the Safari Dinner. So watch this space for the date of the next event – sometime in April or May 2002.

Sandra

## Art Group

Since starting the Art Group in January this year, a regular ten villagers have met on Thursdays from 7.30pm-9.30pm to enjoy a light-hearted atmosphere in which to draw or paint, covering a variety of subjects and techniques. Over 100 paintings have been produced in the span of ten months, so you can see, we like to get busy!



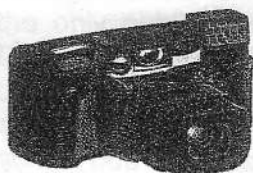
Our Art Exhibition held on Sunday, 4<sup>th</sup> November, attracting 160 visitors was a great success, especially as we were able to raise over £270 for the Wiltshire Air Ambulance Fund.

Personally, I would like to thank all the

members of the Art Group for their hard work and enthusiasm in making the first exhibition such a success. Thanks also to Ray Austin for arranging the free loan of the Exhibition screens (courtesy of Knees of Trowbridge). The Exhibition also presented the opportunity to show the village collage which will soon be on permanent display in the village hall. The collage, created by members of the Ladies Club, stimulated much interest and was greatly admired.

Next year we would like to exhibit art and crafts. So if you have a hobby and would like to take part in the exhibition, please contact Carol Clarke 870635 or Mike Truman 870607.

Mike Truman



Interested in photography and would like some time once a month to meet with a group in the village hall for inspiration and a glass of wine.

Contact

Mike Truman 870607

## Colin Crumpler's JUMBLE SALE

Saturday 8<sup>th</sup> December

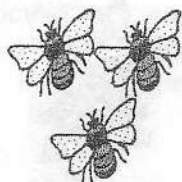
2.30pm. Great Hinton Memorial Hall

Having finished my 'A' levels I am taking a year off before going to university in September 2002. On 9<sup>th</sup> January I leave for 3 months trekking with World Challenge Expeditions to Nepal, during which time I trek to Everest Base Camp and along the way will be involved in a project to assist the Nepalese in some form (such as decorating or repairing schools).

Colin Crumpler 870906

To raise some extra funds for this trip I am holding a jumble sale, the proceeds of which will also benefit The Wiltshire Air Ambulance Service. I will be grateful for any jumble you can provide – a good chance to clear out and make space for Christmas presents!! Please deliver to me before or to the Hall on the Saturday. There will also be a cake stall for which any donations will be welcome. Helpful volunteers also needed for about an hour and a half, if you could spare some time. Thank you all very much.

7 Peppercorn Orchard



A small Christmas present – perhaps a stocking-filler or tree present – or just something different

**Honey from Great Hinton**  
CUT COMB IN A SMALL CARTON (very popular at West Wilts Show)  
OR BY THE JAR

Min – Back Lane – 870634

## Community Committee Report

The Committee continues to support the Hall Trust in providing a sufficient level of funding to maintain the Hall.

In addition we are organising the normal set of social activities for villagers (see below for key details). Now that we do not have a new Village Hall to build we are taking a different attitude to fund raising. We do not have to make money from all of our activities and if we do we can choose to donate some of the money to other charities. Our focus has been on local charities and recently donations have been going to the Wiltshire Air Ambulance.

There has been a tradition in the village of trying to support young villagers who are undertaking special projects or expeditions for which they need to raise significant amounts of money. Often this has taken the form of financial support to young people who have finished school and are going on a major expedition or taking part in a national or international community project before going on to employment or higher education. These awards are small - the maximum award to date has been £60 - but they can help someone who is struggling to get enough money together. The latest award made is to Colin Crumpler who is going off on a seven week expedition to the Nepalese Himalayas in January during a gap year before university. We wish him well and look forward to hearing about his adventures on his return. If there are any other young people who would like to make an application for such support, they should write a letter explaining what they are planning to do and pass it to any Committee member.

Below are details of the forthcoming village social activities. If you have any other ideas for events, contact any member of the Committee.

### DATES FOR YOUR DIARY

Look out for more details closer to the event.

#### Saturday 19 January

Village Hangover Party - Blow away the post new year cobwebs with a party in the Hall; 'games' included, plus food and drink.

#### Saturday 23 February

Quiz Night - Following a successful first quiz night this year we are having another one in February; all good fun, does not follow "The Weakest Link" format.

#### Saturday 13 April

Barn Dance - Our first barn dance in the new hall.

### Great Hinton Memorial Hall Trust

The Trust manages the finance and maintenance of the Hall, and works closely with the Community Committee to ensure that the Hall gets used.

There are still jobs to be completed on the new Hall. The internal stairs have just been rebuilt in order to even out the steps and make them easier to climb. We are due shortly to erect a fence to the left and rear of the Hall. We are hoping to employ someone to clean the Hall regularly.

The Hall is being used increasingly for clubs and private bookings. If you want to make a single or regular booking contact David Harnott on 871196.

Neil Haynes 870153

### 100 Club Winners

	July	August	September	October	November
£14	Mrs Mills	Claire Evans	Peter Doel	Eddie Knight	Sue Smith
£12	Kevin Crumpler	Ken Young	Tom Meade	Mark Newman	Jeff Newman
£10	Ian Purcell	Ian Purcell	Lynn Wiltshire	Margaret Ashton	Carol Clarke
£8	Tom Meade	Kevin Crumpler	Sylvia Tarrant	Brian Shipman	Richard Newman
£5	Doris Saville	Carolyn Haynes	Ruby Perrett	Jillian Fennell	Gwen Harnott

The 100 club draw takes place on the last Tuesday of each month at the Linnet's village B.Y.O. night.



**MAY CHRISTMAS BE A JOYFUL TIME  
AND THE NEW YEAR BRING PEACE  
AND A GENEROSITY OF SPIRIT**

